



10A CRICKET GREEN MITCHAM, CR4 4LA

£1,100 PCM

***** SPACIOUS ONE BED APARTMENT OPPOSITE CRICKET GREEN *****

A converted first floor flat situated in the ever popular cricket green area of Mitcham. The accommodation comprises L shaped Lounge, modern fitted kitchen, double bedroom and shower room with Benefits including double glazing and gas central heating.

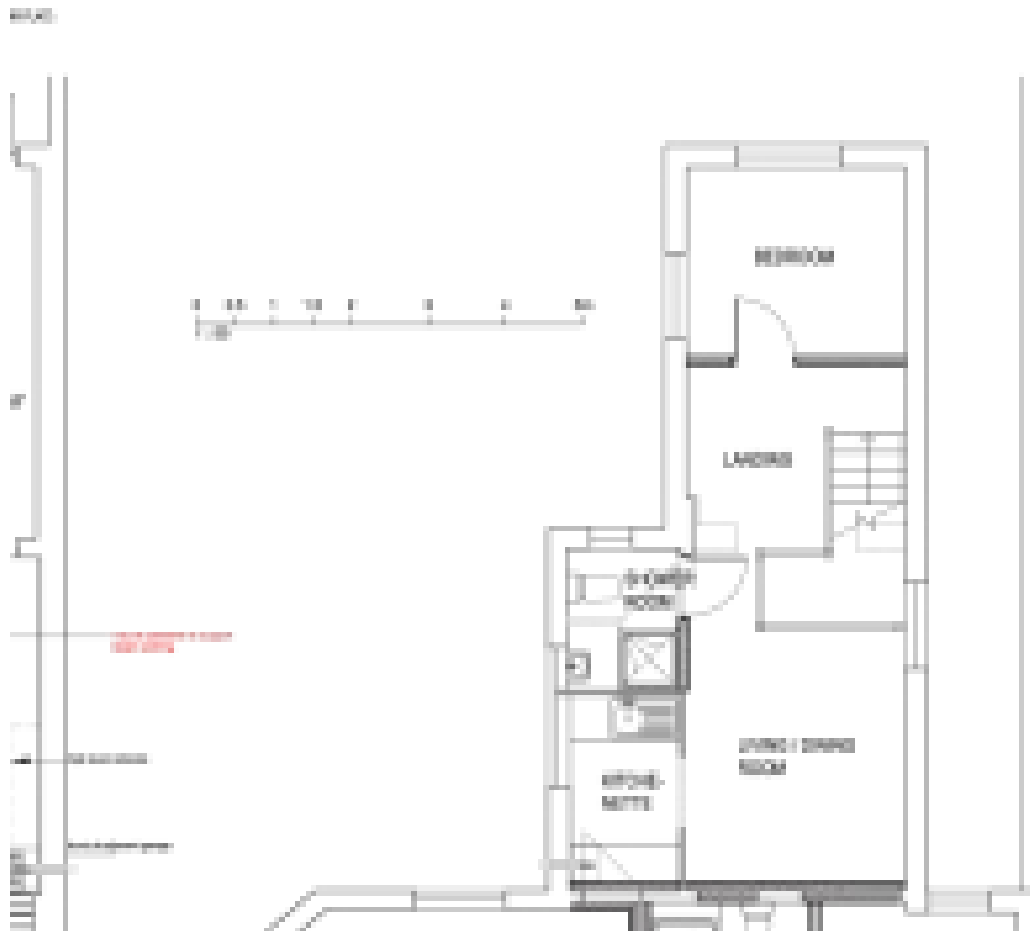
The property is located within proximity to MITCHAM TRAMLINK AND MITCHAM JUNCTION STATION which provides access into London Victoria.

Please note: Photos taken prior to previous tenants' occupancy.

Council Tax: London Borough of Merton - Band C (25/26 - £1,892.02)



TOOMEY
ESTATE AGENTS



Energy Efficiency Rating		
	Current	Potential
Very energy efficient - lower running costs		
(92 plus) A		
(81-91) B		
(69-80) C		
(55-68) D	65	65
(39-54) E		
(21-38) F		
(1-20) G		
Not energy efficient - higher running costs		
England & Wales	EU Directive 2002/91/EC	

Agents Note: Whilst every care has been taken to prepare these particulars, they are for guidance purposes only. All measurements are approximate and are for general guidance purposes only and whilst every care has been taken to ensure their accuracy, they should not be relied upon and potential buyers/tenants are advised to recheck the measurements

Toomey Estate Agents Lettings
333a London Road
Mitcham
Surrey
CR4 4BE

0208 715 9333
enquiries@toomeyestateagents.co.uk
www.toomeyestateagents.co.uk



TOOMEY
ESTATE AGENTS